

RIVERBEND TOWNS

BUYER'S PACKAGE



PLEASE ENQUIRE FOR PRICING



RIVERBEND TOWNS

WWW.LUXHOMESDESIGNBUILD.CA



RENDERING IS ARTIST'S CONCEPT OF COMPLETED BUILDING AND IS SUBJECT TO CHANGE. ILLUSTRATION MAY SHOW OPTIONAL FEATURES THAT ARE NOT INCLUDED IN BASE PRICE. SEE SALES REPRESENTATIVE FOR MORE INFORMATION.



EXTERIOR FEATURES

- LIFETIME WARRANTY ARCHITECTURAL SHINGLES
- MIX OF JAMES HARDIE, BRICK AND STONE EXTERIOR
- SINGLE CAR GARAGE WITH 8'X8' INSULATED GARAGE DOOR
- GARAGE DOOR OPENER
- BLACK EXTERIOR WINDOWS
- BLACK SOFFIT, FASCIA & EAVES TROUGHS
- PAVING STONE DRIVEWAY AND WALKWAY TO FRONT DOOR
- REAR WOOD DECK INCLUDED
- FULLY SODDED

INTERIOR FEATURES

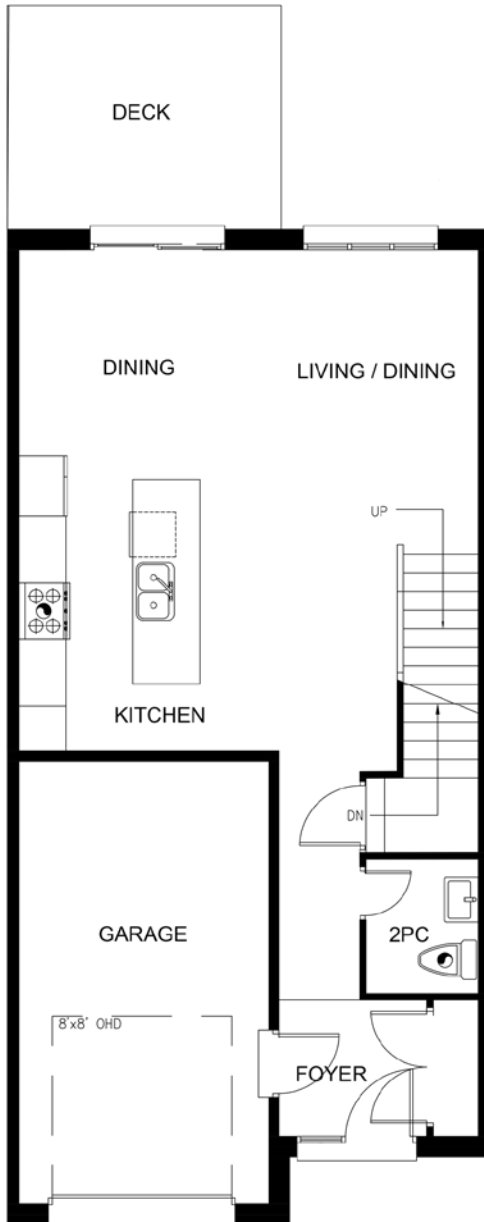
- INCLUDES 8' INTERIOR MAIN AND 8' EXTERIOR DOORS
- 3 1/2" CASING AND MATCHING 5 1/2" BASEBOARD
- PRE-SELECTED POT LIGHTS AND DESIGNER SELECTED LIGHT FIXTURES
- 100 AMP SERVICE
- RANGE HOOD SUPPLIED AND INSTALLED
- ENGINEERED HARDWOOD ON MAIN FLOOR AND SECOND FLOOR HALLWAY
- CUSTOM CABINETRY AND QUARTZ COUNTERTOPS THROUGHOUT
- ENSUITE INCLUDES WALK-IN SHOWER WITH CUSTOM GLASS ENCLOSURE
- LARGE WALK-IN CLOSET IN PRIMARY BEDROOM
- SINGLE SINK IN MAIN BATH / DUAL SINKS IN ENSUITE
- CARPET THROUGHOUT ALL BEDROOMS
- STAINED STAIRS AND RAILING TO MATCH ENGINEERED HARDWOOD ON MAIN FLOOR WITH BLACK ALUMINUM SPINDLES
- ALL BLACK HARDWARE
- TILE FLOORS IN MUDROOM, LAUNDRY AND ALL BATHROOMS
- INTERIOR PAINTED WITH PREMIUM BENJAMIN MOORE REGAL ULTI-MATTE
- 9' CEILINGS ON MAIN FLOOR / 8' CEILINGS ON SECOND FLOOR
- CENTRAL VACUUM INCLUDED
- ALARM SYSTEM INCLUDED
- TANKLESS HOT WATER RENTAL THROUGH RELIANCE

OPTIONAL UPGRADES

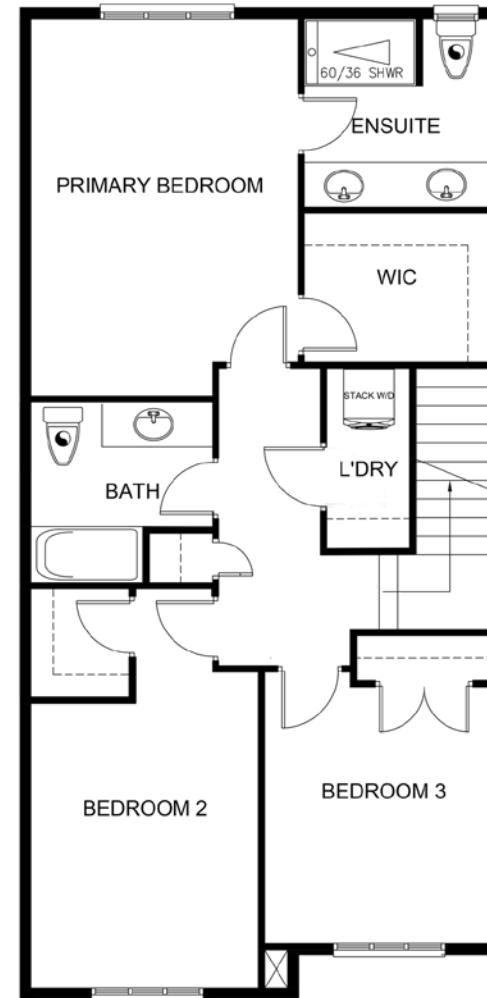
- LG Appliance Package.....**\$7500**
(Electric Stove, Standard Refrigerator & Dishwasher, Microwave, LG WashTower Stackable Washer & Electric Dryer (White)
- Upgrade to hardwood in upper bedroom level hallway.....**\$3000**
- White roller shades (room darkening in bedrooms, 1% in all other areas).....**\$3500**
- Upgrade to finished basement, includes 3 pc bath.....**\$40,000**

STANDARD INTERIOR UNITS

1600 SQ FT



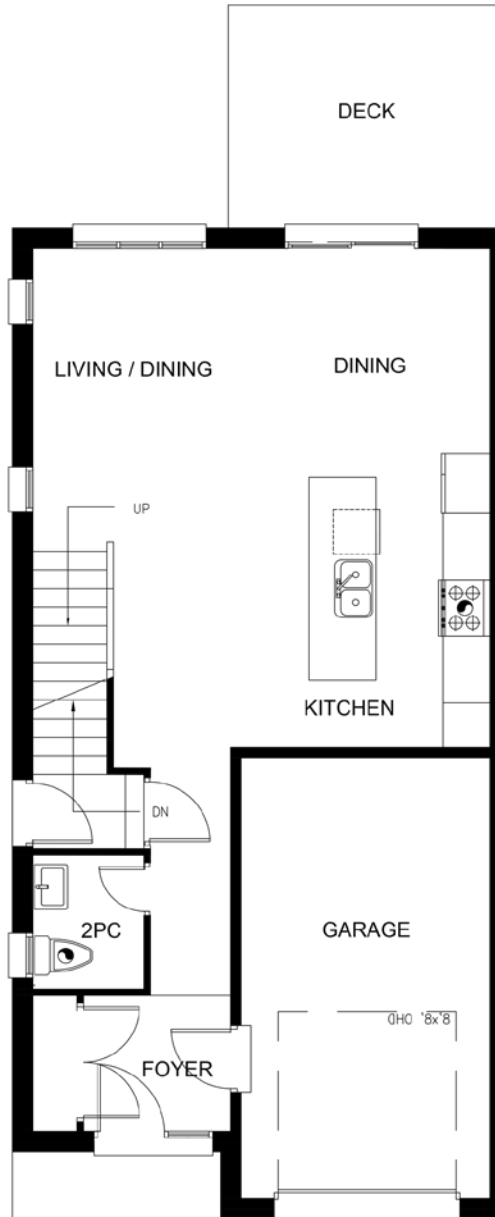
MAIN FLOOR



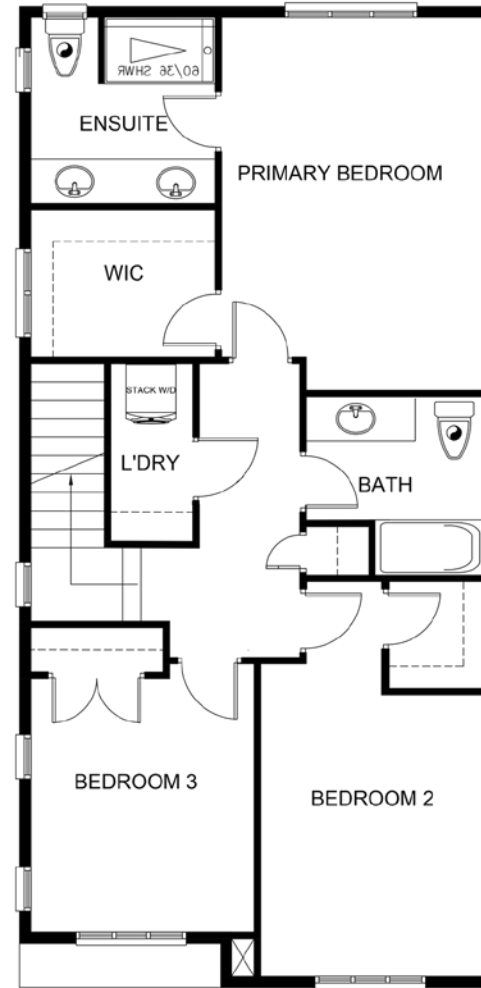
SECOND FLOOR

STANDARD CORNER UNITS

1630 SQ FT



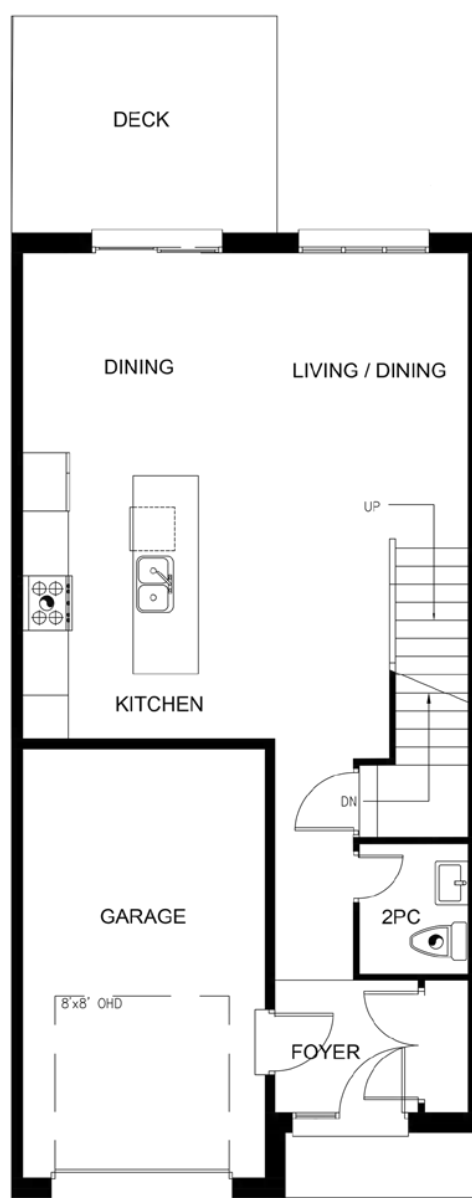
MAIN FLOOR



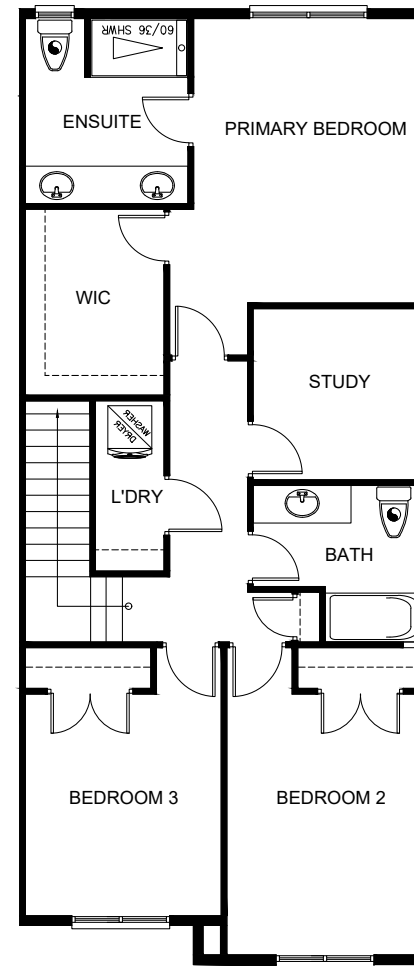
SECOND FLOOR

PREMIUM INTERIOR UNITS

1768 SQ FT



MAIN FLOOR



SECOND FLOOR

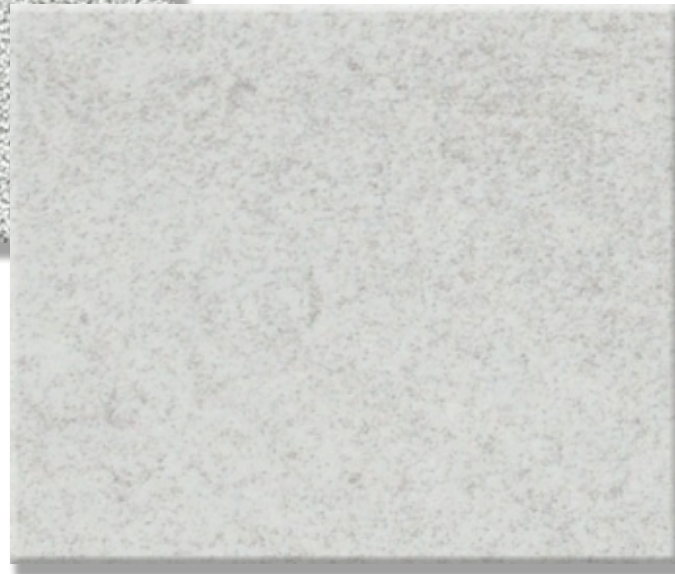
FLOORING SELECTIONS



STANDARD HARDWOOD



STANDARD CARPET



STANDARD FLOOR TILE

STANDARD HARDWOOD

TWELVE OAKS WHITE OAK
COLOUR: SUMMERWOOD
6 1/2" X 3/4" X RANDOM LENGTHS

STANDARD FLOOR TILE

CERATEC CALIZA
COLOUR: GESSO

AREAS USED:

MUDROOM, LAUNDRY ROOM,
MAIN BATH FLOOR, ENSUITE FLOOR

STANDARD CARPET

DREAMWEAVER BREAKVIEW
COLOUR: MILESTONE

CABINETS SELECTIONS



STANDARD KITCHEN

FLUSH SLAB DOOR IN MATTE FINISH WITH
SLEEK MATTE BLACK FINGER PULL
HARDWARE

COUNTER SELECTIONS



STANDARD QUARTZ

A NEUTRAL VARIETY OF QUARTZ BOASTING A PURIST WHITE FOUNDATION SPECKLED WITH WISPY GREY VEINING.

PATTERN: VEINED
FINISH: POLISHED

PLUMBING SELECTIONS



STANDARD KITCHEN FAUCET



STANDARD LAVATORY FAUCET



STANDARD
SHOWER HEAD
TUB TRIM KIT



STANDARD DROP-IN TUB - MAIN BATH

LIGHT FIXTURE SELECTIONS



POWDER ROOM, MAIN BATH, ENSUITE



FLUSH -MOUNT
AREAS: BEDROOMS,
MUDROOM, LAUNDRY ROOM, WIC,
DINETTE & UPPER HALLWAY



EXTERIOR WALL LIGHT

PAINT SELECTIONS



STANDARD - TRIM COLOUR
BENJAMIN MOORE - CHANTILLY LAVE OC-65



STANDARD - WALL COLOUR
BENJAMIN MOORE - DECORATORS WHITE

APPLIANCES



LG REFRIGERATOR

36" Width, 23.7 cu. ft. Capacity, Counter Depth, Water Dispenser (Exterior), Ice Dispenser (Thru Door)



LG ELECTRIC RANGE

30" Elec. 6.3 cu ft. Range | EasyClean®, Stainless, Slide-in



LG WASHER AND DRYER

Single Unit Front Load LG WashTower® with Centre Control™ 5.2 cu. ft. Washer 7.4 cu. ft. dryer



LG MICROWAVE

1.5 cu ft. Countertop Microwave | Smart Inverter, Sensor Cook & NeoChef™, Stainless



LG DISHWASHER

Front Control Dishwasher with LoDecibel Operation and Dynamic Dry™

